



# Linx 8900/8910

## Continuous ink jet printers

The Linx 8900 and 8910 printers make operation, reliability and efficiency easier than ever. So you can spend more time coding, and increasing output from your production line.

With Linx reliability built-in, this coder will operate continually in your production environment and also help reduce delays from production line stoppages. Real-time output and line stoppage reporting also helps you to maximise your production and add value back to your business.

### Simple operation for error-free coding

- Large, icon-driven high-resolution touch screen, with at-a-glance production-rate visibility
- Customisable top screen, on-screen message prompts for faster, accurate code setup
- Store multiple line settings for added flexibility
- Simple, one-touch, fluid cartridge refills during printing – no mess, no tools, no mistakes
- Self-service with an on-screen Wizard which guides operators through the service process – for a quick, engineer-free service in around 30 minutes, with up to 18 months between services.

### Built-in reliability for increased uptime

- Linx's industry-leading printhead is completely sealed for continual reliable operation – typically requires cleaning only once every three months
- Quick, clean starts every time with Autoflush – less manual printhead cleaning, so less solvent waste and maintenance time required
- Automatic fluid checking and long eight hour fluid refill warnings – less unplanned downtime and less printer monitoring
- Seasonal shutdown mode – printer is ready to print first time, even after extended shutdown, with no need for expensive printer flushing.

### Improve your production line efficiencies

- Linx Printernet enabled – remote monitoring and control of Linx 8900 printers via a secure, cloud-based service
- Accurate, real-time output measurement on screen
- On-screen production rates with output and line stoppage logs
- Customisable logs provide precise reasons for any production line holdups – identify efficiency improvements on your line
- Print both primary and secondary codes with a 20mm high print option on the Linx 8910.



# Linx 8900/8910

## PRINTHEAD

60mm minimum bend radius in static applications. 180mm minimum bend radius in dynamic applications.



## SIDE ELEVATION



## FRONT ELEVATION



## 90° PRINTHEAD OPTION



## Technical Specifications

### PRINT SPEEDS AND SIZES

Printhead:	Mk11 Midi	Mk11 Midi plus
Nozzle size:	62 µm	75 µm
Lines of print:	1, 2 or 3	1, 2 or 3
Character height range:	8900: 1.8 to 8.8 mm 8910: 1.8 to 20 mm	8900: 2.1 to 10.7 mm 8910: 2.1 to 20 mm
Maximum speed for single line print (5 dot high characters):	8900: 2.92 m/s (0.37 mm drop pitch) 8910: 6.25 m/s (0.47 mm drop pitch)	8900: 2.84 m/s (0.44 mm drop pitch) 8910: 7.28 m/s (0.57 mm drop pitch)
Maximum speed for two line print (7 dot high characters):	8900: 1.46 m/s (0.37 mm drop pitch) 8910: 2.09 m/s (0.37 mm drop pitch)	8900: 1.42 m/s (0.44 mm drop pitch) 8910: 2.02 m/s (0.44 mm drop pitch)
Recommended distance from printhead to substrate:	8900: 12mm 8910: 12mm (35mm for carton coding message style)	8900: 20mm 8910: 20mm (45mm for carton coding message style)

### HARDWARE FEATURES

- Easi-Change® Service Module, change interval: up to 18 months (13,000 hours) – dye-based inks, up to 12 months (6,000 hours) – soft pigmented inks\*
- Unique automatic printhead flushing: typical cleaning interval 3 months (100 starts and stops) – dye-based inks, up to 1 month – soft pigmented inks
- Printhead jet-speed control and temperature sensing for consistent printing in changing ambient temperatures
- Mistake-proof, mess-free ink and solvent refilling while printing (0.5 litre ink cartridge, 1 litre solvent cartridge)
- 10-inch full colour touch screen with tough, solvent-resistant polymer cover
- Durable ink pump with no scheduled changes required
- Extended shutdowns (up to 3 months) without printer flushing or draining
- Robust, flexible dual-tube conduit for static and moving printhead applications

### SOFTWARE FEATURES

- Single-press start print, pause print and jet shutdown
- Auto power-off after jet shutdown
- Simple message creation and editing with drag-and-drop field positioning, zoom function and insert mode for long messages
- Total print count, message count and batch count
- Message store display and message style selection
- Password-protected functions, with customisable user profiles

### Message creation/editing while printing

- On-screen output rate measurement and production stoppage log. Downloadable onto USB device
- On-screen fluid level indicators, 12 hour running from fluid refill warning to printer stop in most applications
- On-screen help and diagnostics information
- QuickSwitch® message selection and editing using bar code scanner
- PrintSync® automatic font and message format selection, based on message style selected and production line speed
- Multiple operator languages (user selectable) with on-screen keyboards, secondary keyboard for multi-language printing
- Simple line speed and shaft encoder setup wizard, for installation on new production lines
- Message store and printer settings backup, copy and restore using USB storage device
- Simple Communications Protocol (YAML based scripts) and Linx Remote Communications Interface for connection to PCs or PLCs using Ethernet port or optional RS232 port

### MESSAGE PRINTING FACILITIES

- Text, symbols and numbers
- Prompted fields for one-step message editing with customisable on-screen prompts
- Height, width and delay functions for easy code sizing and positioning
- Automatic formats for printing dates, times and date rounding (using the printer's internal clock)
- Custom date and time editor to create different date formats as required
- Automatic date forward function. Add number of seconds, minutes, hours to the current time, or number of days, weeks or months to the current date
- Automatic time adjustment option for daylight savings time
- Sequential numbering, forward and backward counting, variable intervals
- One-touch sequential number reset option from the printer screen, and reset using external trigger
- Number of messages stored: up to 1000 using internal printer memory (depending on message content), more can be stored using a USB storage device
- Bold character printing (up to 9 times)
- Variable character spacing and inverse image printing, for improved readability and vision system recognition
- Rotated character (tower) printing
- Shift coding (message content changes automatically at defined times)
- Graphics and logos can be imported into the printer as bitmap files using the USB port
- Reverse and inverted printing (option)
- Barcodes (ITF 2 of 5, Code 39, Code 128, EAN 13, EAN 8, UPCA, Pharmacode, Data Matrix, QR Code, RM4SCC-Type C)

### PRINTHEAD

- 2m conduit
- 4m conduit (option)
- 6m conduit (option)
- 90° printhead (option)
- Positive air purge to printhead (provides improved reliability in dusty or humid environments) (option)
- Air dryer (provides improved reliability for certain inks at high humidity and temperature) (option)
- Active Airflow Control (8910 factory fit option) for lower solvent consumption and reduced emissions. Reduces consumption by up to 40% (ink and application dependent, 2m or 4m conduits)

### INK RANGE

- Linx MEK base (dye-based, soft pigmented-based)
- Linx mixed base (MEK-free, dye-based)
- Linx ethanol base (MEK-free, dye-based)

### CONNECTIONS/INTERFACING FOR

- Product detector
- Shaft encoder/second product detector
- External single-stage alarm output (24v) with multi-stage alarm option
- USB – for message backup and transfer, and wifi connection for Linx Printernet
- Ethernet
- Volt-free contact alarm connection (e.g. for use with external mains-driven alarm) (option)
- Dual alarm output (Volt free and 24V output) (option)
- RS232 (option) and Parallel I/O (option)

### PHYSICAL CHARACTERISTICS

- Base and enclosure: Stainless steel
- IP55 environmental protection rating\*\*
- Mounting options: Static stand, mobile stand, bench, wall mount bracket
- Operating temperature range: 5-45°C (0-50°C for Linx 1240 ink type)
- Humidity range (r.h., non-condensing): 90% max
- Power supply: 100-230V, 50/60Hz
- Power consumption: 38W (typical when printing)
- Power rating: 150 W
- Weight: 24kg (including fluids and printhead)

### REGULATORY APPROVALS

- GS • CE • EAC • UL • CAN/CSA • FCC

\*Interval may be adjusted in certain environments and applications to provide reliable running between service module changes

\*\*IP rating is independently verified – certificates available on request

For more information, contact Linx Printing Technologies Ltd, Linx House, 8 Stocks Bridge Way, Compass Point Business Park, St Ives, Cambs, PE27 5JL, UK.

Telephone +44 (0)1480 302100 Email sales@linxglobal.com Website www.linxglobal.com

Linx and Easi-Change are registered trademarks of Linx Printing Technologies Ltd.

© Linx Printing Technologies Ltd 2021





# Linx 8920

## Continuous ink jet printers

Code more information, and on faster lines, with the Linx 8920.

The Linx 8920 CIJ printer provides flexible coding with up to 6 lines of print across a wide range of production line speeds, and with fewer maintenance interventions than other CIJ printers. With a simple, touch screen interface, and unique on-screen system monitoring with extended service intervals, the Linx 8920 is designed to make your coding life easier.

### Easy to use for quick code setup and operation

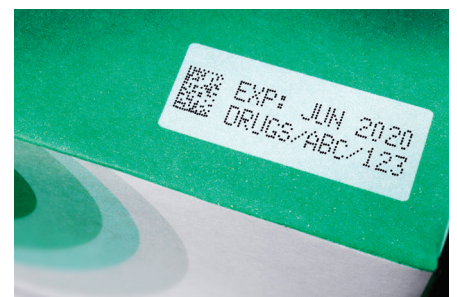
- Store up to 50 named line settings – for quick retrieval at product changeovers; settings can be transferred between printers with a USB flash drive
- Large, icon-driven high-resolution touch screen, with at-a-glance production-rate visibility
- Customisable top screen, one touch operation for common tasks, on-screen message prompts for faster, accurate code setup
- Simple, one-touch, fluid cartridge refills during printing – no mess, no tools, no mistakes
- Self-service with an on-screen Wizard which guides operators through the service module change process – for a quick, engineer-free service.

### Reliable coding for longer

- Extended service module change intervals up to 18,000hrs/24 months – code for longer without interventions
- Advanced System Monitoring – internal monitoring helps to avoid unscheduled stoppages between service module changes – reliable coding for longer
- Quick, clean startups every time – robust, completely sealed printhead, and Autoflush feature ensure continual reliable operation
- Seasonal shutdown mode – printer is ready to print first time, even after extended shutdown, with no need for expensive printer flushing.

### Flexible coding with more printing capabilities

- Linx Printernet enabled – remote monitoring and control of Linx 8900 printers via a secure, cloud-based service
- Code up to six lines of code, including 2D barcodes
- Coding at faster line speeds as standard – up to 7.28m/s for one line of code
- Carton coding option, up to 20mm high print
- Sequential text and flexible sequential number printing
- Real-time output on screen – meet your OEE targets with the printer screensaver 'On/Off target'.





# Linx 8920

## PRINTHEAD

60mm minimum bend radius in static applications. 180mm minimum bend radius in dynamic applications.



## SIDE ELEVATION



## FRONT ELEVATION



## 90° PRINTHEAD OPTION



## Technical Specifications

### PRINT SPEEDS AND SIZES

Printhead:	Mk11 Midi	Mk11 Midi plus
Nozzle size:	62 µm	75 µm
Lines of print:	Up to 6	Up to 6
Character height range:	1.8 to 20 mm	2.1 to 20 mm
Maximum speed for single line print (5 dot high characters):	6.25 m/s (0.47 mm drop pitch)	7.28 m/s (0.57 mm drop pitch)
Maximum speed for two line print (7 dot high characters):	2.46 m/s (0.43 mm drop pitch)	2.38 m/s (0.52 mm drop pitch)
Recommended distance from printhead to substrate:	12mm (35mm for carton coding message style)	20mm (45mm for carton coding message style)

### HARDWARE FEATURES

Easi-Change® Service Module, change interval: up to 24 months (18,000 hours) – dye-based inks, up to 12 months (6,000 hours) – soft pigmented inks\*

Unique automatic printhead flushing: typical cleaning interval 3 months (100 starts and stops) – dye-based inks, up to 1 month – soft pigmented inks

Printhead jet-speed control and temperature sensing for consistent printing in changing ambient temperatures

Mistake-proof, mess-free ink and solvent refilling while printing (0.5 litre ink cartridge, 1 litre solvent cartridge)

10-inch full colour touch screen with tough, solvent-resistant polymer cover

Durable ink pump with no scheduled changes required

Extended shutdowns (up to 3 months) without printer flushing or draining

Robust, flexible dual-tube conduit for static and moving printhead applications

### SOFTWARE FEATURES

Single-press start print, pause print and jet shutdown

Auto power-off after jet shutdown

Simple message creation and editing with drag-and-drop field positioning, zoom function and insert mode for long messages

Total print count, message count and batch count

Message store display and message style selection

Password-protected functions, with customisable user profiles

Message creation/editing while printing

On-screen output rate measurement and production stoppage log. Downloadable onto USB

On-screen fluid level indicators, 12 hour running from fluid refill warning to printer stop in most applications

On-screen help and diagnostics information

PrintSync® automatic font and message format selection, based on message style selected and production line speed

Multiple operator languages (user selectable) with on-screen keyboards, secondary keyboard for multi-language printing

Simple line speed and shaft encoder setup wizard, for installation on new production lines

Up to 50 line settings can be stored, with individual line names

Message store and printer settings backup, copy and restore using USB storage device

Simple Communications Protocol (YAML based scripts) and Linx Remote Communications Interface for connection to PCs or PLCs using Ethernet port or optional RS232 port

QuickSwitch® message selection and editing using bar code scanner

### MESSAGE PRINTING FACILITIES

Text, symbols and numbers

Prompted fields for one-step message editing with customisable on-screen prompts

Height, width and delay functions for easy code sizing and positioning

Automatic formats for printing dates, times and date rounding (using the printer's internal clock)

Custom date and time editor to create different date formats as required

Automatic date forward function. Add number of seconds, minutes, hours to the current time, or number of days, weeks or months to the current date

Automatic time adjustment option for daylight savings time

Sequential numbering, forward and backward counting, variable intervals, multiple number ranges, alphanumeric sequencing

One touch sequential number reset option from the printer screen, and reset using external trigger

Sequential text fields, increment and reset sequences using external triggers, optional one touch sequence reset from the printer screen

'Production Schedule' function, to print a sequence of messages automatically, with different triggering and repeat print options

Number of messages stored: up to 1000 using internal printer memory (depending on message content), more can be stored using a USB storage device

Bold character printing (up to 9 times)

Variable character spacing and inverse image printing, for improved readability and vision system recognition

Rotated character (tower) printing

Shift coding (message content changes automatically at defined times)

Graphics and logos can be imported into the printer as bitmap files using the USB port

Reverse and inverted printing

Barcodes (ITF 2 of 5, Code 39, Code 128, EAN 13, EAN 8, UPCA, Pharmacode, Data Matrix, QR Code, RM4SCC-Type C)

### PRINTHEAD

2m conduit

4m conduit (option)

6m conduit (option)

90° printhead (option)

Positive air purge to printhead (provides improved reliability in dusty or humid environments) (option)

Air dryer (provides improved reliability for certain inks at high humidity and temperature) (option)

Active Airflow Control (8920 factory fit option) for lower solvent consumption and reduced emissions. Reduces consumption by up to 40% (ink and application dependent, 2m or 4m conduits)

### INK RANGE

Linx MEK base (dye-based, soft pigmented-based)

Linx mixed base (MEK-free, dye based)

Linx ethanol base (MEK-free, dye based)

### CONNECTIONS/INTERFACING FOR

Product detector

Shaft encoder/second product detector

External single-stage alarm output (24v) with multi-stage alarm option

USB – for message backup and transfer, and wifi connection for Linx Printernet

Ethernet

Volt-free contact alarm connection (e.g. for use with external mains-driven alarm) (option)

Dual alarm output (Volt-free and 24V output) (option)

RS232 (option) and Parallel I/O (option)

### PHYSICAL CHARACTERISTICS

Base and enclosure: Stainless steel

IP55 environmental protection rating\*\*

Mounting options: Static stand, mobile stand, bench, shelf for wall mounting

Operating temperature range: 0 – 50°C for 1240, 1010, 1014 and 3240 ink types, (5-45°C for other MEK base, Mixed base, Ethanol base ink types)

Humidity range (r.h., non-condensing): 90% max

Power supply: 100-230V, 50/60Hz

Power consumption: 38W (typical when printing)

Power rating: 150 W

Weight: 24.5kg (including fluids and printhead)

### REGULATORY APPROVALS

• GS • CE • EAC • UL • CAN/CSA • FCC

\*Interval may be adjusted in certain environments and applications to provide reliable running between service module changes

\*\*IP rating is independently verified – certificates available on request





# Linx 8940

## Continuous ink jet printers

Code faster, in more demanding applications, with the Linx 8940.

The Linx 8940 provides flexible coding with up to 6 lines of print, on high speed production lines, and in challenging environments. With an IP65 rating, simple touch screen interface, and fewer maintenance interventions, the Linx 8940 is designed to provide high speed, low maintenance coding.

### Easy to use for quick code setup and operation

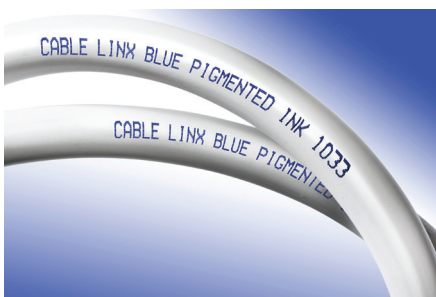
- Store up to 50 named line settings – for quick retrieval at product changeovers; settings can be transferred between printers with a USB flash drive
- Large, icon-driven high-resolution touch screen, with at-a-glance production-rate visibility
- Customisable top screen, one touch operation for common tasks, on-screen message prompts for faster, accurate code setup
- Simple, one-touch, fluid cartridge refills during printing – no mess, no tools, no mistakes
- Self-service with an on-screen Wizard which guides operators through the service module change process – for a quick, engineer-free service.

### Reliable coding for longer

- IP65 rating as standard – for reliable operation in wet or dusty conditions, and no need for an external compressed air supply
- Extended service intervals up to 18,000hrs/ 24 months – code for longer without interventions
- Advanced System Monitoring – internal monitoring helps to avoid unscheduled stoppages – reliable coding for longer
- Quick, clean startups every time – robust, completely sealed printhead, and Autoflush feature ensure continual reliable operation
- Seasonal shutdown mode – printer is ready to print first time, even after extended shutdown, with no need for expensive printer flushing.

### Flexible coding with more printing capabilities

- Linx Printernet enabled – remote monitoring and control of Linx 8900 printers via a secure, cloud-based service
- Code up to six lines of code, including 2D barcodes
- High speed coding as standard – at production line speeds up to 9.1m/s
- Carton coding option, up to 20mm high print
- Real-time output on screen – meet your OEE targets with the printer screensaver 'On/Off target'; identify patterns in overall line downtime with the output/downtime reporting feature, and improve your efficiencies.



# Linx 8940

## PRINTHEAD

60mm minimum bend radius in static applications. 180mm minimum bend radius in dynamic applications.



## SIDE ELEVATION



## FRONT ELEVATION



## 90° PRINTHEAD OPTION



## Technical Specifications

### PRINT SPEEDS AND SIZES

Printhead:	Mk11 Midi	Mk11 Midi plus
Nozzle size:	62 µm	75 µm
Lines of print:	Up to 6	Up to 6
Character height range:	1.8 to 20 mm	2.1 to 20 mm
Maximum speed for single line print (5 dot high characters):	7.50 m/s (0.47 mm drop pitch)	9.10 m/s (0.57 mm drop pitch)
Maximum speed for two line print (7 dot high characters):	2.65 m/s (0.43 mm drop pitch)	2.56 m/s (0.52 mm drop pitch)
Recommended distance from printhead to substrate:	12mm (35mm for carton coding message style)	20mm (45mm for carton coding message style)

### HARDWARE FEATURES

Easi-Change® Service Module, change interval: up to 24 months (18,000 hours) – dye-based inks, up to 12 months (6,000 hours) – soft pigmented inks\*

Unique automatic printhead flushing: typical cleaning interval 3 months (100 starts and stops) – dye-based inks, up to 1 month – soft pigmented inks

Printhead jet-speed control and temperature sensing for consistent printing in changing ambient temperatures

Mistake-proof, mess-free ink and solvent refilling while printing (0.5 litre ink cartridge, 1 litre solvent cartridge)

10-inch full colour touch screen with tough, solvent-resistant polymer cover

Durable ink pump with no scheduled changes required

Extended shutdowns (up to 3 months) without printer flushing or draining

Robust, flexible dual-tube conduit for static and moving printhead applications

### SOFTWARE FEATURES

Single-press start print, pause print and jet shutdown

Auto power-off after jet shutdown

Simple message creation and editing with drag-and-drop field positioning, zoom function and insert mode for long messages

Total print count, message count and batch count

Message store display and message style selection

Password-protected functions, with customisable user profiles

Message creation/editing while printing

On-screen system monitoring, to measure key ink system and environmental parameters, to help avoid unscheduled stoppages

On-screen output rate measurement and production stoppage log. Downloadable onto USB

On-screen fluid level indicators, 12 hour running from fluid refill warning to printer stop in most applications

### On-screen help and diagnostics information

PrintSync® automatic font and message format selection, based on message style selected and production line speed

Multiple operator languages (user selectable) with on-screen keyboards, secondary keyboard for multi-language printing

Simple line speed and shaft encoder setup wizard, for installation on new production lines

Up to 50 line settings can be stored, with individual line names

Message store and printer settings backup, copy and restore using USB storage device

Simple Communications Protocol (YAML based scripts) and Linx Remote Communications Interface for connection to PCs or PLCs using Ethernet port or optional RS232 port

QuickSwitch® message selection and editing using bar code scanner

### MESSAGE PRINTING FACILITIES

Text, symbols and numbers

Prompted fields for one-step message editing with customisable on-screen prompts

Height, width and delay functions for easy code sizing and positioning

Automatic formats for printing dates, times and date rounding (using the printer's internal clock)

Custom date and time editor to create different date formats as required

Automatic date forward function. Add number of seconds, minutes, hours to the current time, or number of days, weeks or months to the current date

Automatic time adjustment option for daylight savings time

Sequential numbering, forward and backward counting, variable intervals, multiple number ranges, alphanumeric sequencing

One touch sequential number reset option from the printer screen, and reset using external trigger

Sequential text fields, increment and reset sequences using external triggers, optional one touch sequence reset from the printer screen

'Production Schedule' function, to print a sequence of messages automatically, with different triggering and repeat print options

Number of messages stored: up to 1000 using internal printer memory (depending on message content), more can be stored using a USB storage device

Bold character printing (up to 9 times)

Variable character spacing and inverse image printing, for improved readability and vision system recognition

Rotated character (tower) printing

Shift coding (message content changes automatically at defined times)

Graphics and logos can be imported into the printer as bitmap files using the USB port

Reverse and inverted printing

Barcodes (ITF 2 of 5, Code 39, Code 128, EAN 13, EAN 8, UPCA, Pharmacode, Data Matrix, QR Code, RM4SCC-Type C)

### PRINTHEAD

2m conduit

4m conduit (option)

6m conduit (option)

90° printhead (option)

Positive air purge to printhead (provides improved reliability in dusty or humid environments) (option)

Air dryer (provides improved reliability for certain inks at high humidity and temperature) (option)

Active Airflow Control (8940 factory fit option) for lower solvent consumption and reduced emissions. Reduces consumption by up to 40% (ink and application dependent, 2m or 4m conduits)

### INK RANGE

Linx MEK base (dye-based, soft pigmented-based)

Linx mixed base (MEK-free, dye based)

Linx ethanol base (MEK-free, dye based)

### CONNECTIONS/INTERFACING FOR

Product detector

Shaft encoder/second product detector

External single-stage alarm output (24v)

USB – for message backup and transfer, and wifi connection for Linx Printernet

Ethernet

Volt-free contact alarm connection (e.g. for use with external mains-driven alarm) (option)

Dual alarm output (Volt-free and 24V output) (option) with multi-stage alarm option

RS232 (option) and Parallel I/O (option)

### PHYSICAL CHARACTERISTICS

Base and enclosure: Stainless steel

IP65 environmental protection rating\*\*

Mounting options: Static stand, mobile stand, bench, shelf for wall mounting

Operating temperature range: 0 – 50°C for 1240, 1010, 1014 and 3240 ink types, (5-45°C for other MEK base, Mixed base, Ethanol base ink types)

Humidity range (r.h., non-condensing): 90% max

Power supply: 100-230V, 50/60Hz

Power consumption: 38W (typical when printing)

Power rating: 150 W

Weight: 24.5kg (including fluids and printhead)

### REGULATORY APPROVALS

• GS • CE • EAC • UL • CAN/CSA • FCC

\*Interval may be adjusted in certain environments and applications to provide reliable running between service module changes

\*\*IP rating is independently verified – certificates available on request

